

**TI Connect and the TI-84 Plus Silver Edition:
Installation and Operating System and Application Updates**
Sarah L. Mabrouk, Framingham State College

You can download the current version of the TI Connect software at <http://education.ti.com/us/product/accessory/connectivity/features/software.html>; this page has some general information as well as a hyperlink to information about the system requirements for the current version. Click the Download TI Connect Now > hyperlink and then select the desired version, Windows or Mac, on the next page, <http://education.ti.com/us/product/accessory/connectivity/down/download.html>; here we select the Windows version. In order to download the software, you will need to login; if you are not a registered user, you will be able to register on this page. Then, on the next download page, select the desired language, here English; the next page lists the file size and the version number.

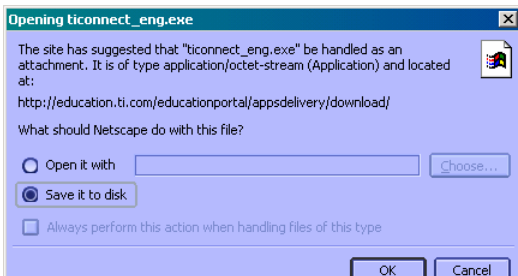


Figure 1: The opening ticonnect_eng.exe dialog box.

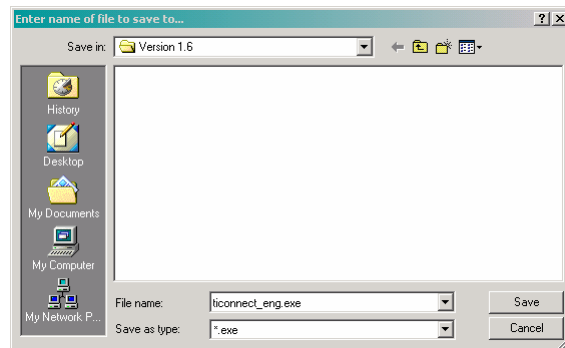


Figure 2: The enter name of file to save to dialog box.

After you have completed the download steps, the Opening ticonnect_eng.exe dialog box, Figure 1, will open: select Save it to disk and click Ok. Next, you will need to choose a folder into which to save the file; here, we save ticonnect_eng.exe in the folder Version 1.6 in My_Download_Programs so that the file can be easily found for installation; you will find it helpful to organize your downloaded software.

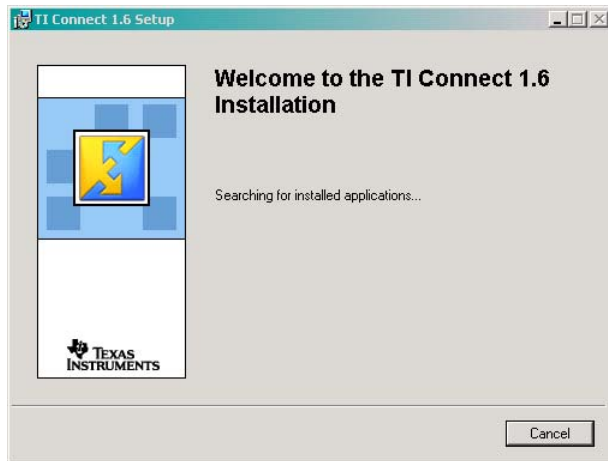


Figure 3: The first TI Connect installation window.

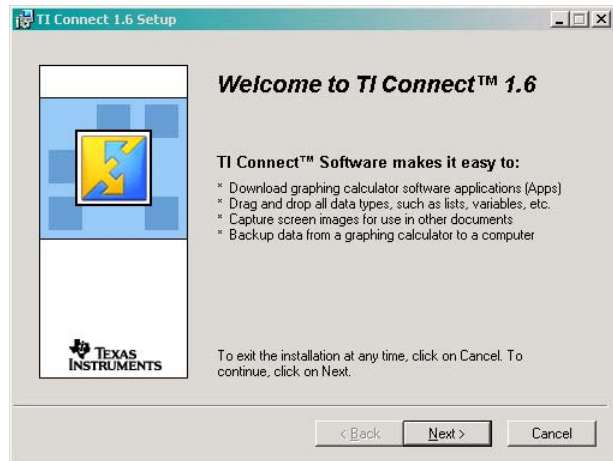


Figure 4: Window providing general information about TI Connect.

After the download is complete, navigate to the folder into which you saved the file and double-click the filename/icon to install the program: installation of the program will begin immediately. You will have the option to cancel the installation by selecting No as displayed in Figure 5. The Texas Instruments PC Software License Agreement window, Figure 6, provides the license agreement for the software; you must choose to accept the license agreement in order to install the software.

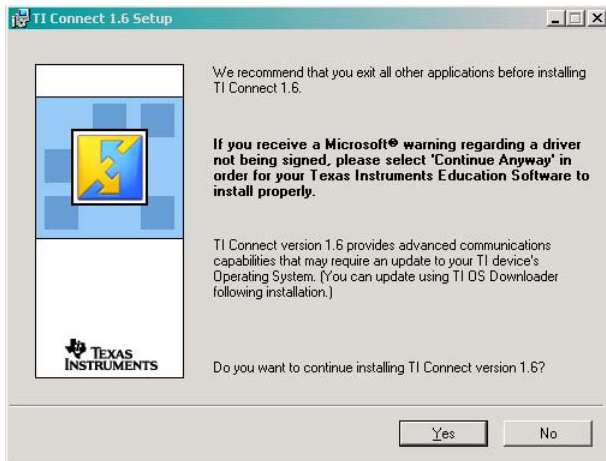


Figure 5: General information about TI Connect 1.6 installation.

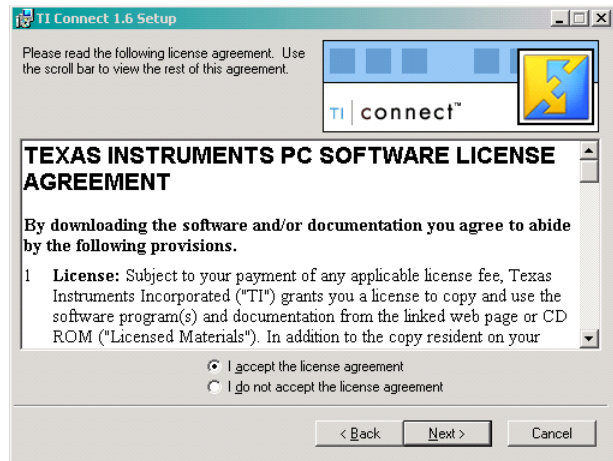


Figure 6: The TI PC Software License agreement.

Next, Figure 7, you select the location to which the program files are to be saved; you can check the disk cost as well. The next installation window allows you to check the folder location that you have selected. If you choose to change the folder location or folder name, you can select Back to go back to the previous window and make any desired changes.

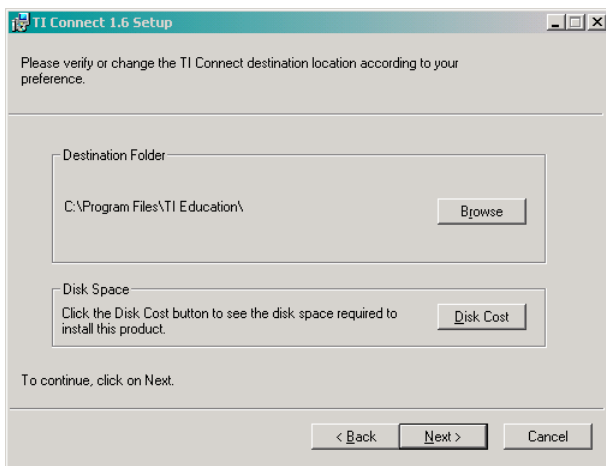


Figure 7: Select the program file and check the disk cost.

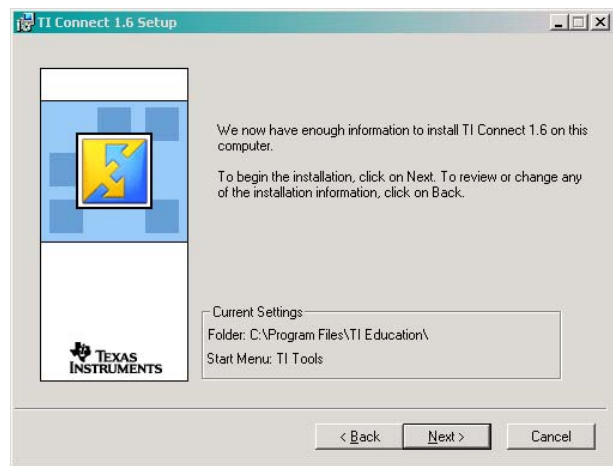


Figure 8: Check the selected folder location.

It is important to mention that it is best to use the program selected folder rather than saving the program in another folder: some programs have been set up to run best within the Program Files folder. However, if you have already used the folder TI Education in the Program Files folder for some other non-TI software, it might be best to choose another folder name in the Program Files folder.

Upon clicking Next, the program will install; you can monitor the installation program using the progress bar in the installation window, Figure 9. When installation is complete, you can choose to view the program ReadMe file; since this file is stored in the program file, you can view the ReadMe file later.

Now, we are ready to start the program. Figure 11 displays the TI Tools menu on the Windows Program Menu. We need to connect the calculator using the cable, here the USB cable, to the computer and let Windows detect and install the device; it is important to make sure that the cable is properly attached to the computer and to the calculator in order for the program to detect the connection location.

In order to establish the device connection, open the TI DeviceExplorer and allow the program to detect the calculator; if you have any problem in establishing the connection, there is a help facility available.

Once the connection between the calculator and the computer has been established, the information will be displayed in the TI DeviceExplorer window, Figure 12.

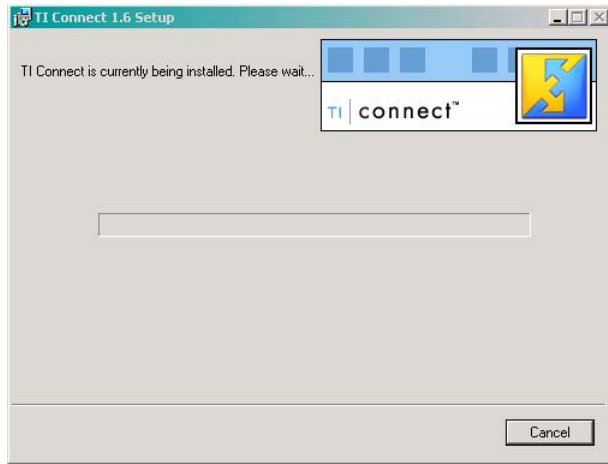


Figure 9: Installation of the program.

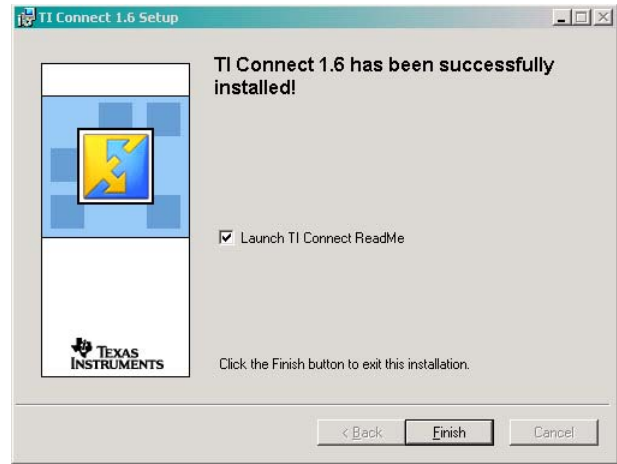


Figure 10: The final installation window.

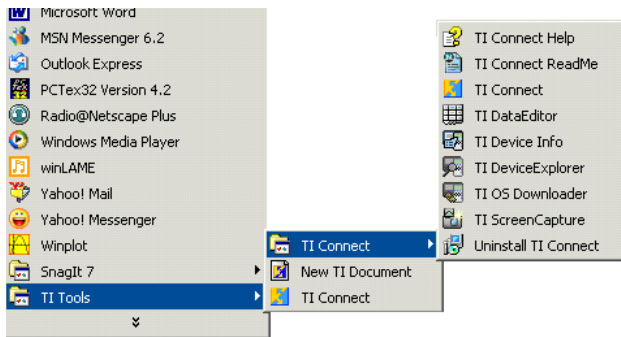


Figure 11: The TI Tools menu on the Windows Program Menu.

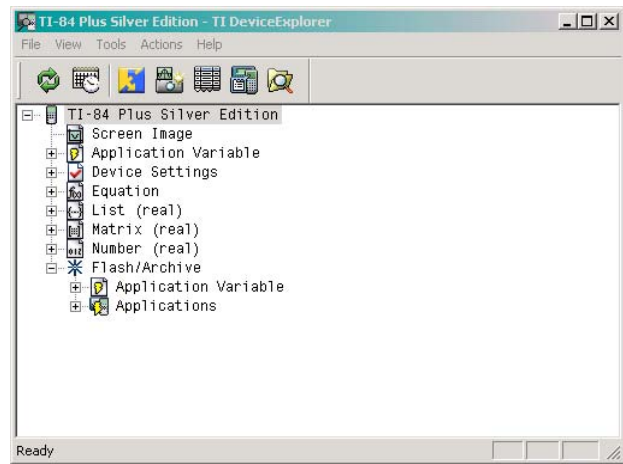


Figure 12: The TI DeviceExplorer window.

The TI DeviceExplorer window can be accessed from the TI Connect program window, Figure 13; all components of TI Connect can be accessed from the TI Connect program window.

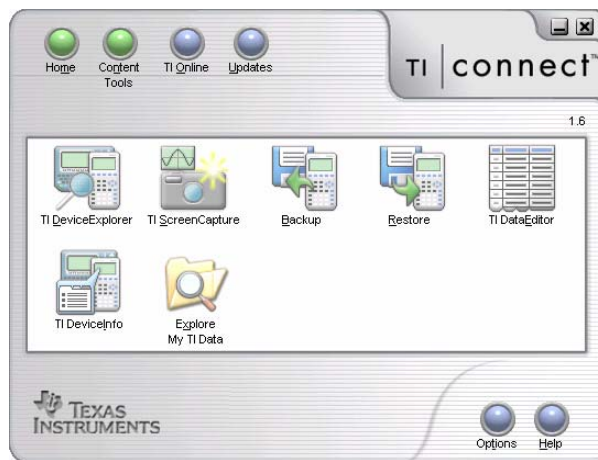


Figure 13: The TI Connect Window.

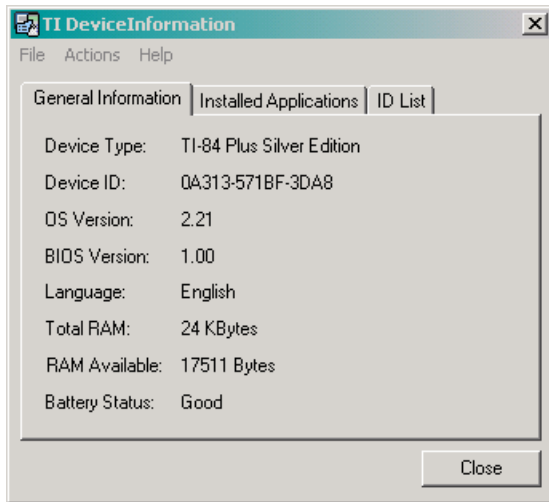


Figure 14: The TI DeviceInformation.

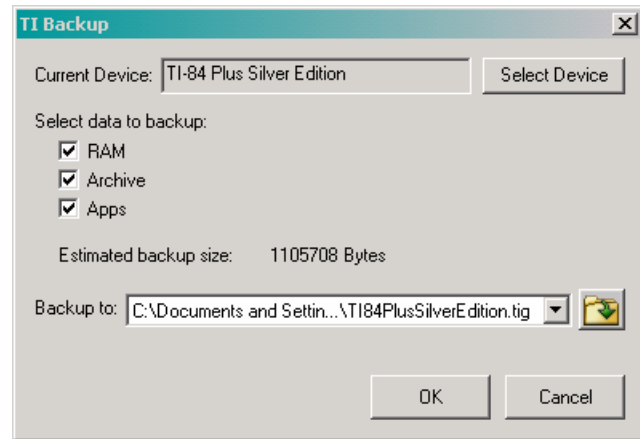


Figure 15: The TI Backup window.

Using the DeviceInformation icon, you can access and save the information about the installed applications and ID information for your calculator, Figure 14.

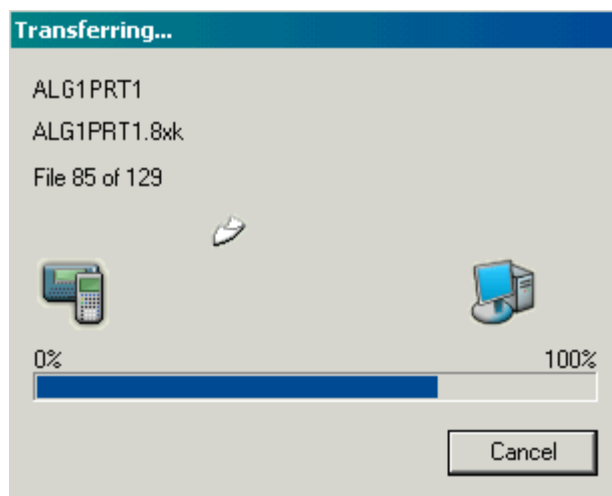


Figure 16: The Transferring files window.

Before you update the operating system for your calculator, you should backup the files/data and applications on your calculator. Figure 15 displays the TI Backup window and Figure 16 displays the progress window for backing up the files/data and applications; be patient since the backup process takes time.

Once you have completed the back up, you can use the Updates button in the TI Connect window to search for updates for your calculator. The backup allows you to restore any data that or special applications that you had saved on or downloaded to your calculator. After updating the operating system, you can restore any data that you need and restore any special applications that you added or restore any missing applications.

Upon initiating the TI Update, the TI Update window opens: you can select the types of updates that you would like to download, Figure 17. The new versions of any selected items from the last window, for example the operating system or applications, are listed: you select the updates that you would like to download.

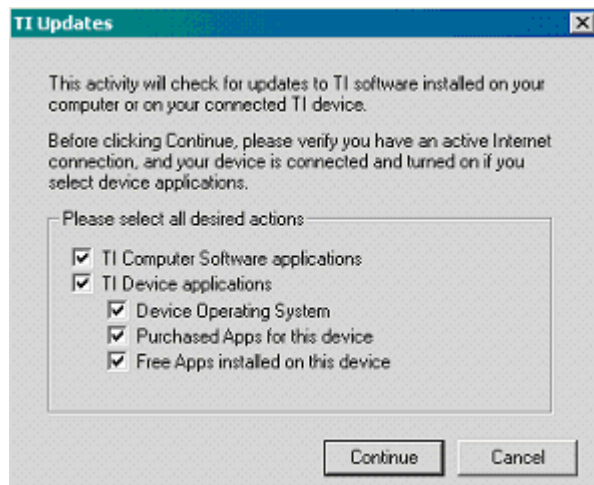


Figure 17: The TI Updates window.

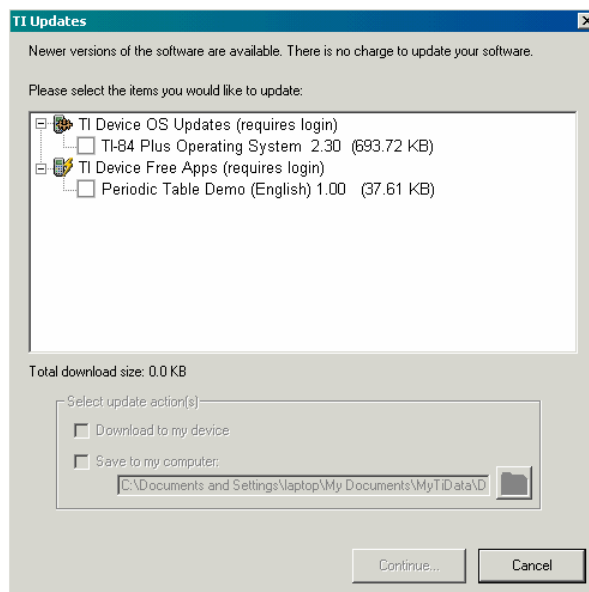


Figure 18: Select the desired updates.

Information about the program applications and operating system can be accessed at <http://education.ti.com/us/product/tech/84pse/apps/appslst.html>. In order to update the operating system, we download the operating system to the pc hard drive.

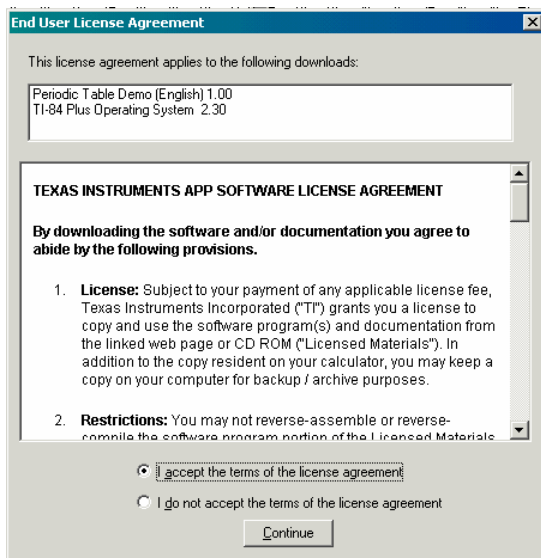


Figure 19: Accept the User License Agreement.

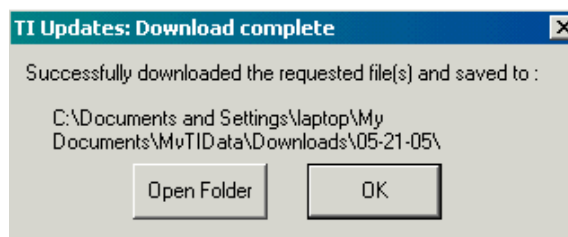


Figure 20: TI Updates Download complete window.

Once you have selected the desired updates, select Continue. You will be asked to accept the user license agreement before the download begins; if you do not accept the license agreement then the download will be terminated.

You can choose to download the updates directly to the calculator or to the hard drive. For operating system updates it is best to download to the pc hard drive and then install the updates using the TI OSDownloader, Figure 21, in the TI DeviceExplorer. For detailed information on the process look up updating with TI OS Downloader in the Help feature.

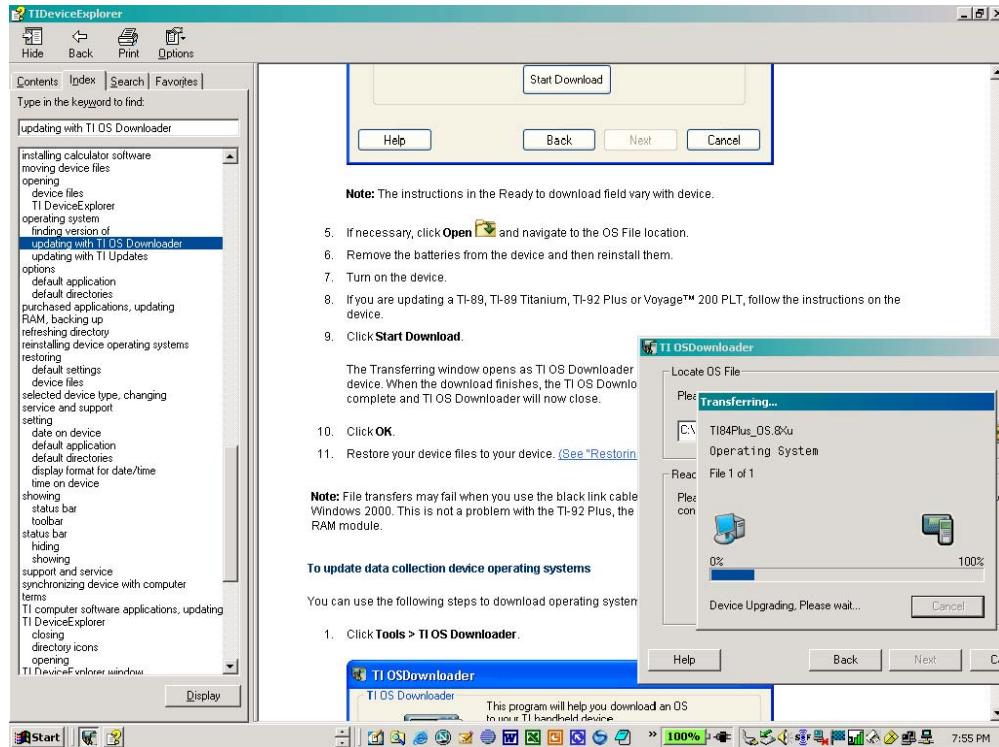


Figure 21: Updating with TI OS Downloader.

Figure 22 displays the TI Updates window for updating the Periodic Table Demo; here, the demo was downloaded directly to the calculator.

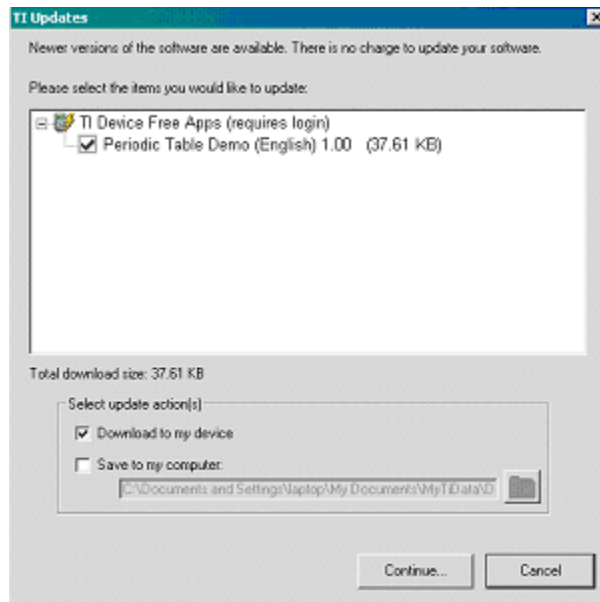


Figure 22: The TI Updates window with direct to device download selected.

I hope that you found this information for downloading and installing the TI Connect software and for updating the TI84 operating system and applications useful. There are more capabilities of the TI Connect software to explore.

Please feel free to contact me, smabrouk@frc.mass.edu, if you have any questions.