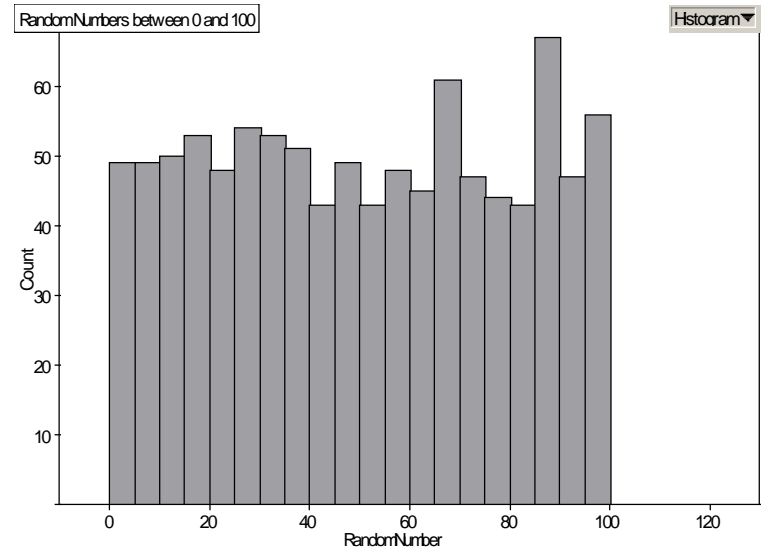
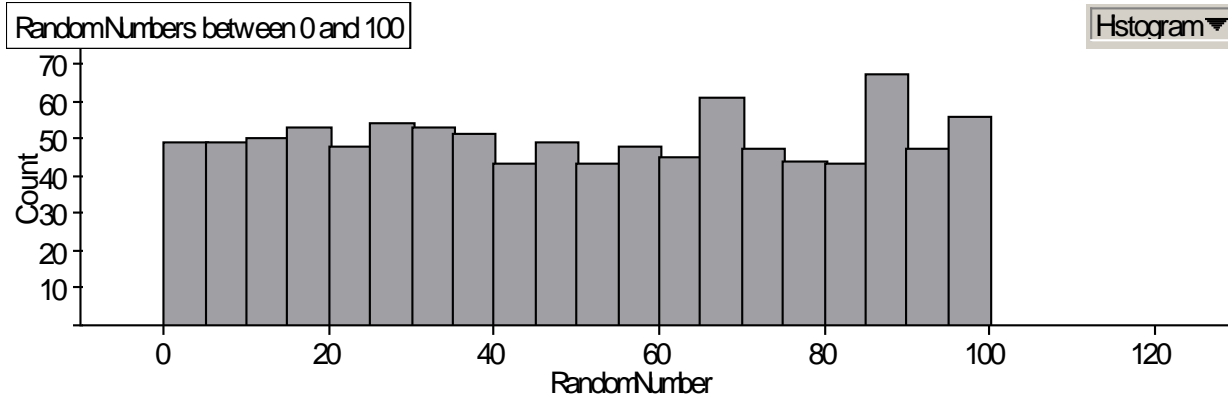


# Misleading Graphs

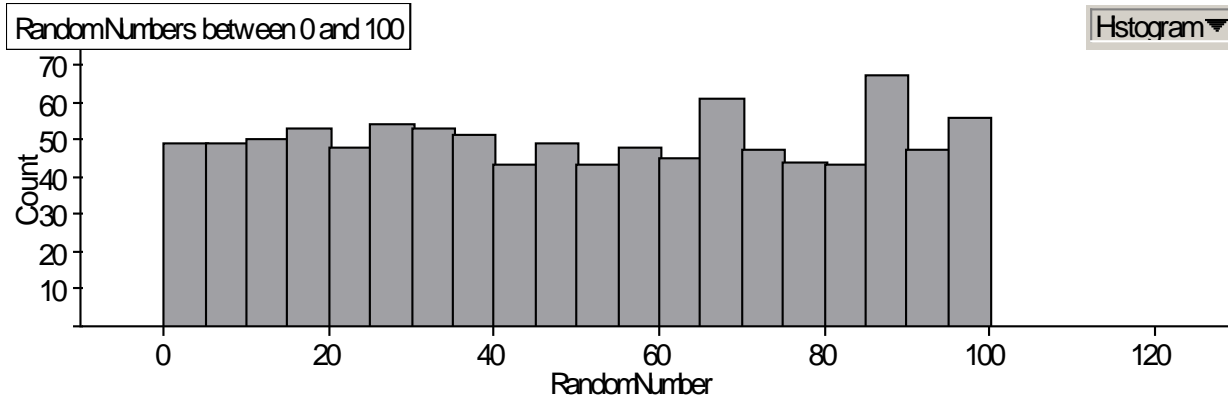
# Misleading Graphs

- What makes a graph meaningful?
- What makes a graph misleading?

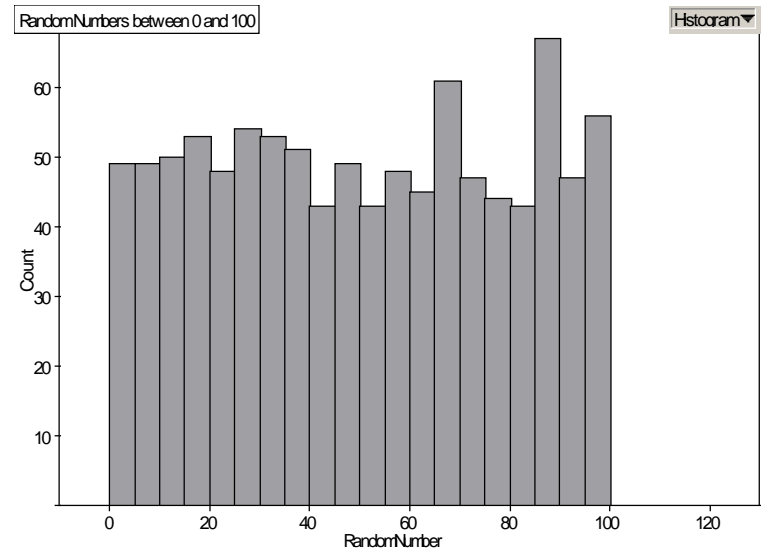
# Examine the graphs below.



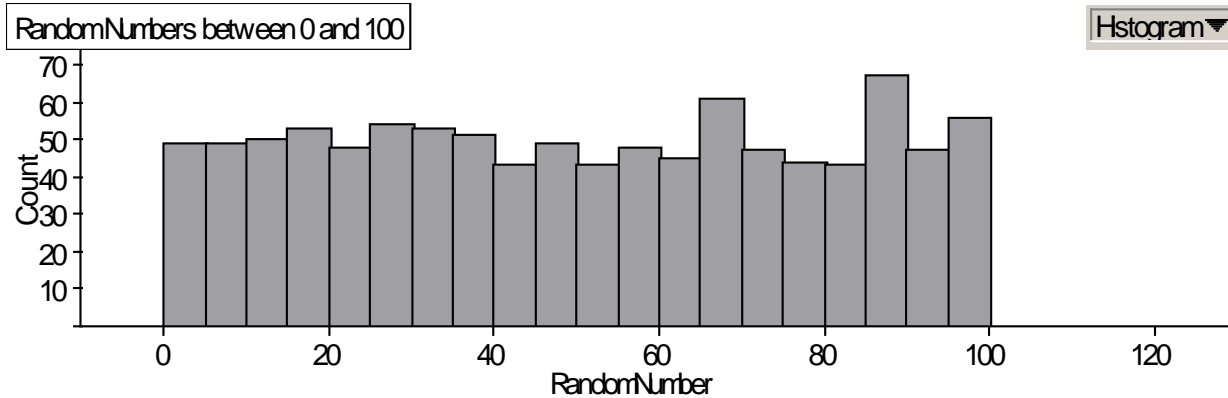
# Examine the graphs below.



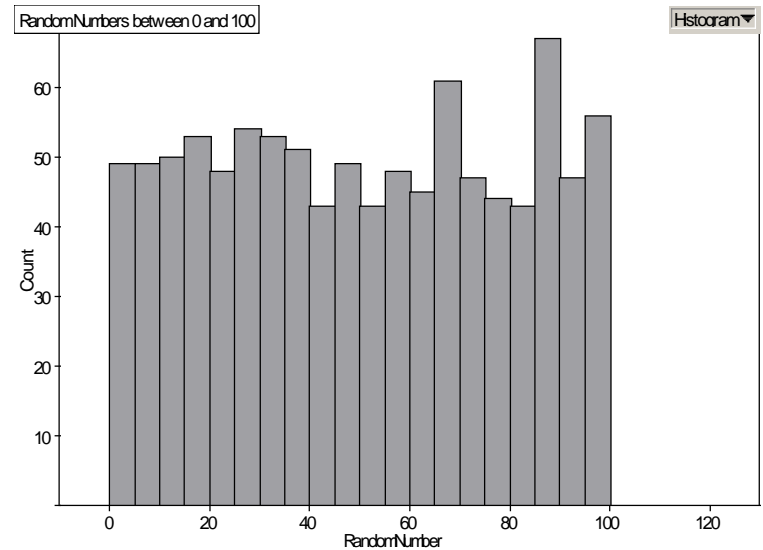
- Are they similar?  
Are they different?



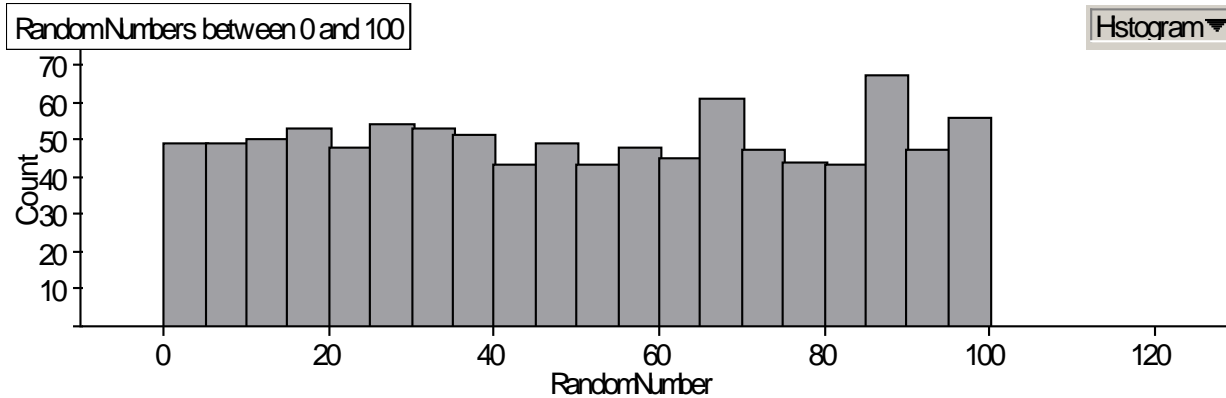
# Examine the graphs below.



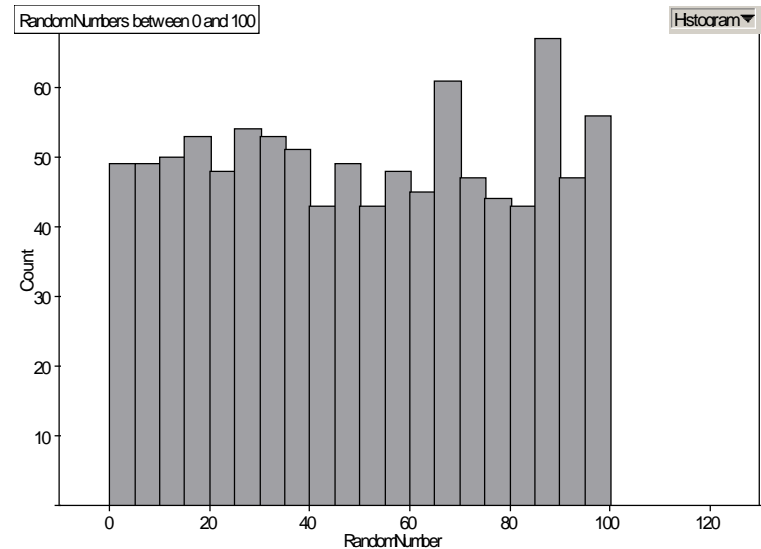
- These are the same graph!



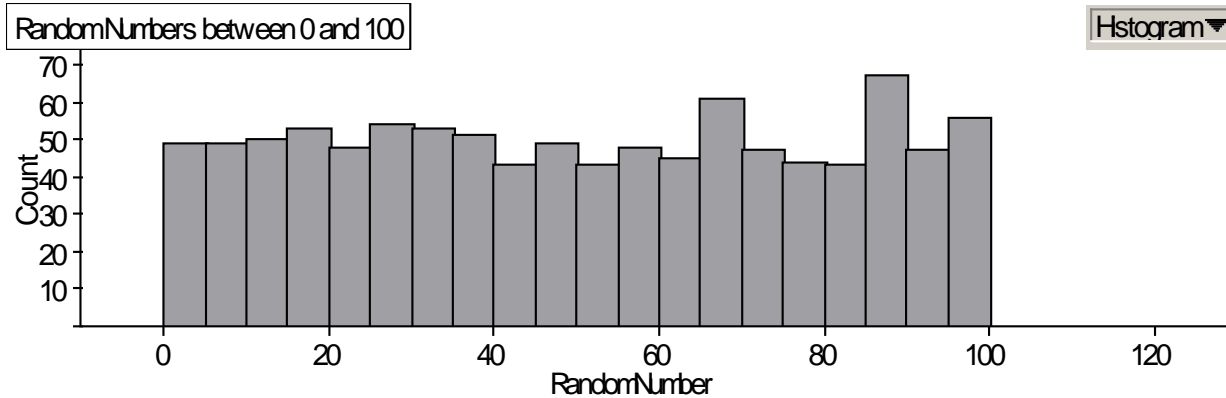
# Examine the graphs below.



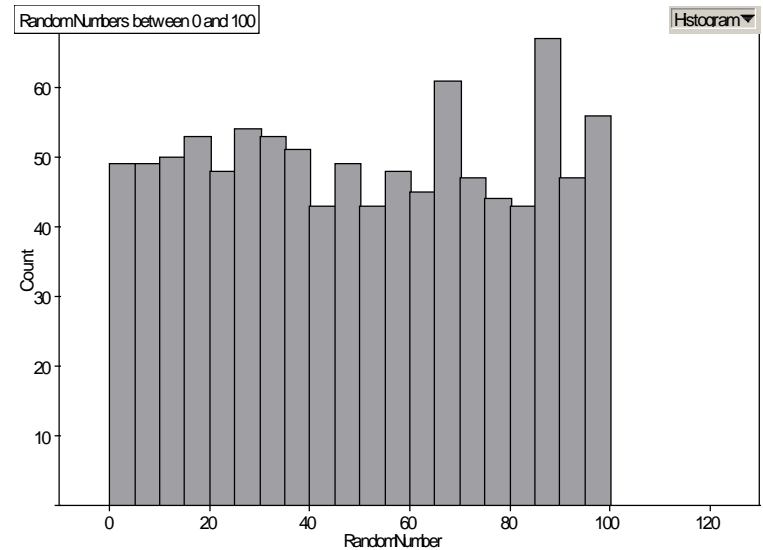
- These are the same graph!
  - The graph above has been stretched horizontally.



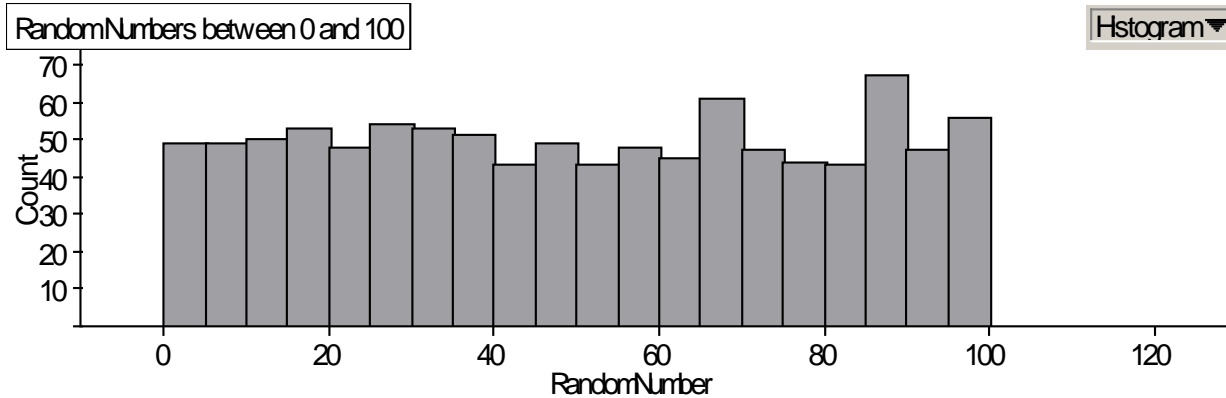
# Examine the graphs below.



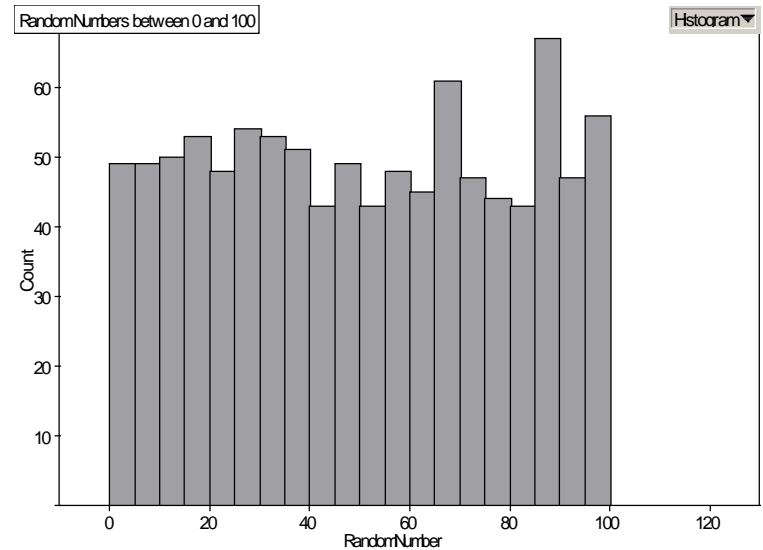
- These are the same graph!
  - The graph to the right has been compressed horizontally.



# Examine the graphs below.

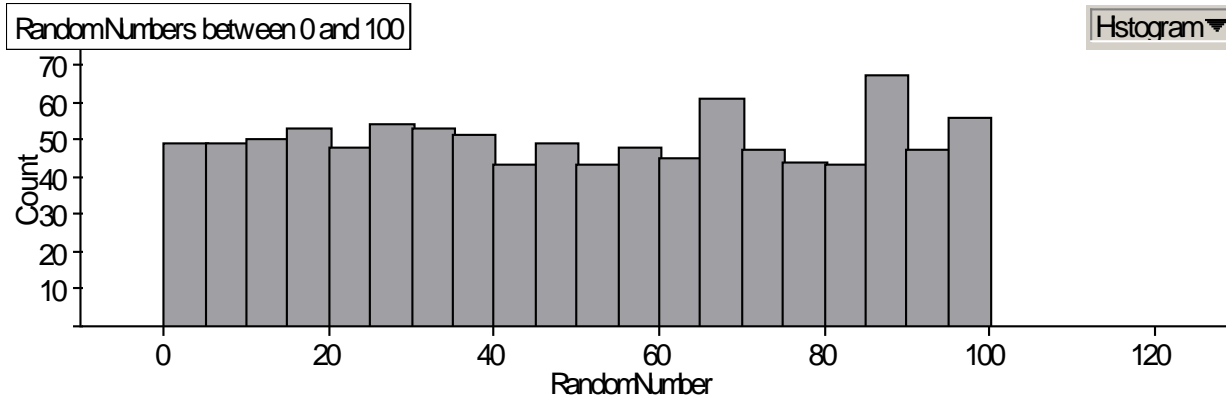


- These are the same graph!
  - The graph above has been compressed vertically.

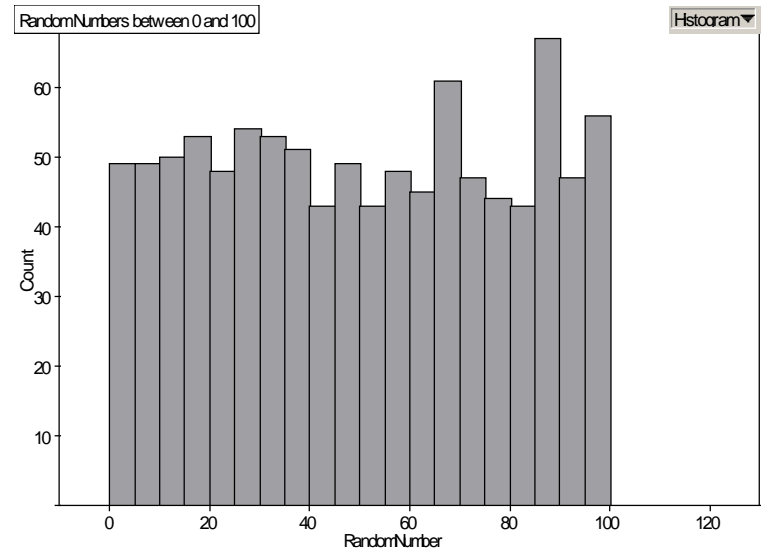




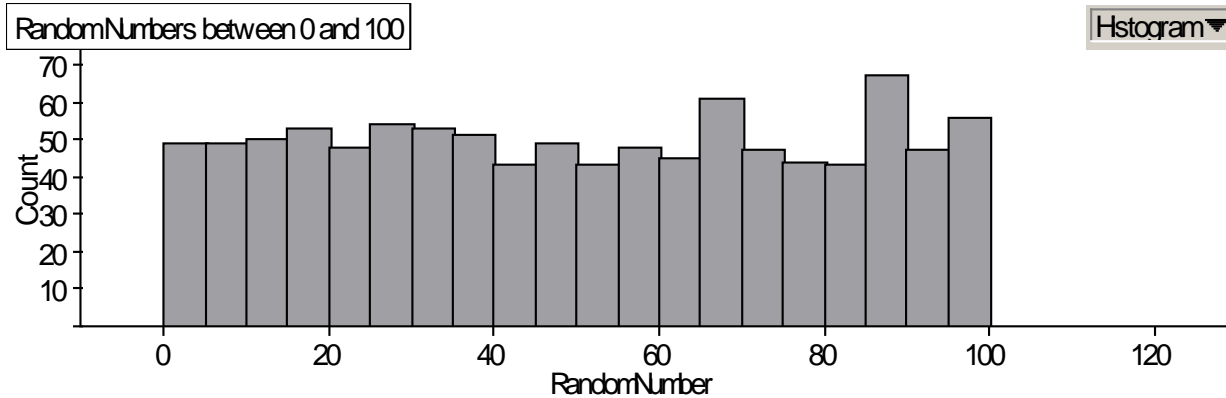
# Examine the graphs below.



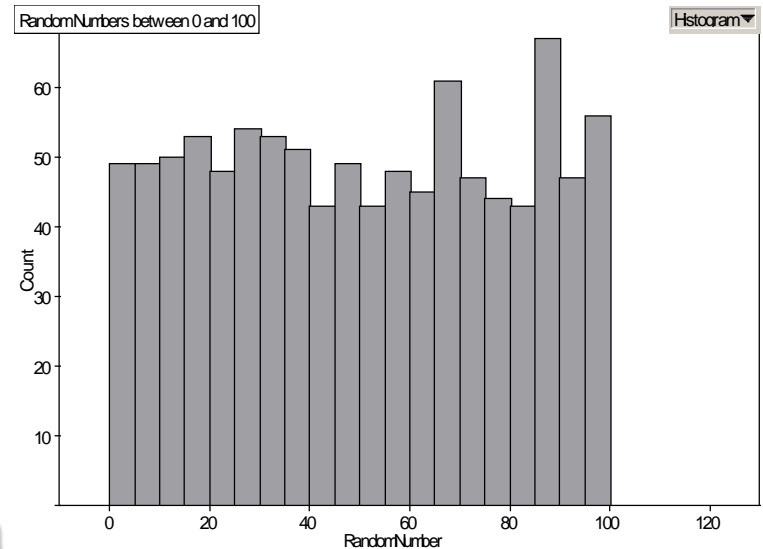
- These are the same graph!
  - The graph to the right has been stretched vertically.



# Examine the graphs below.



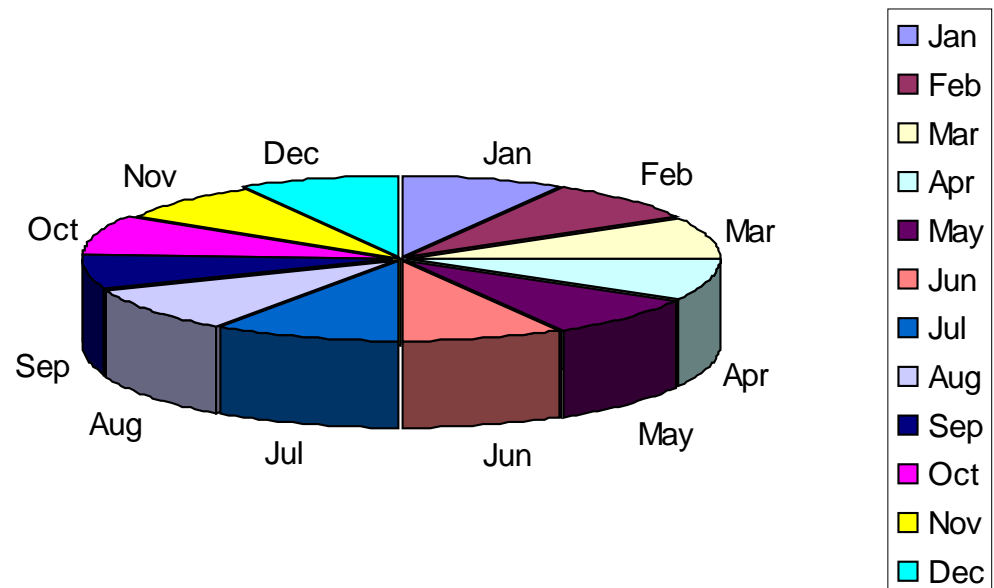
- These are the same graph!
  - Stretching or compressing a graph affects how the information is perceived.



# Pie Chart

- Is the graph below *comprehensible* or is it *misleading*?

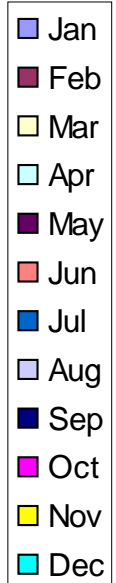
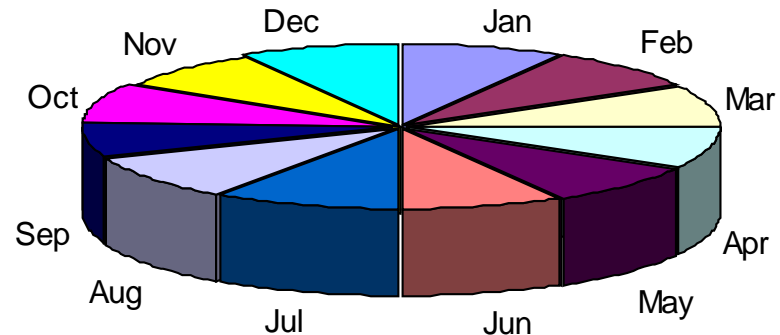
Solar Eclipses by Month (1901-2000)  
Relative Frequency



# Pie Chart

- Is the graph below *comprehensible* or is it *misleading*?

Solar Eclipses by Month (1901-2000)  
Relative Frequency

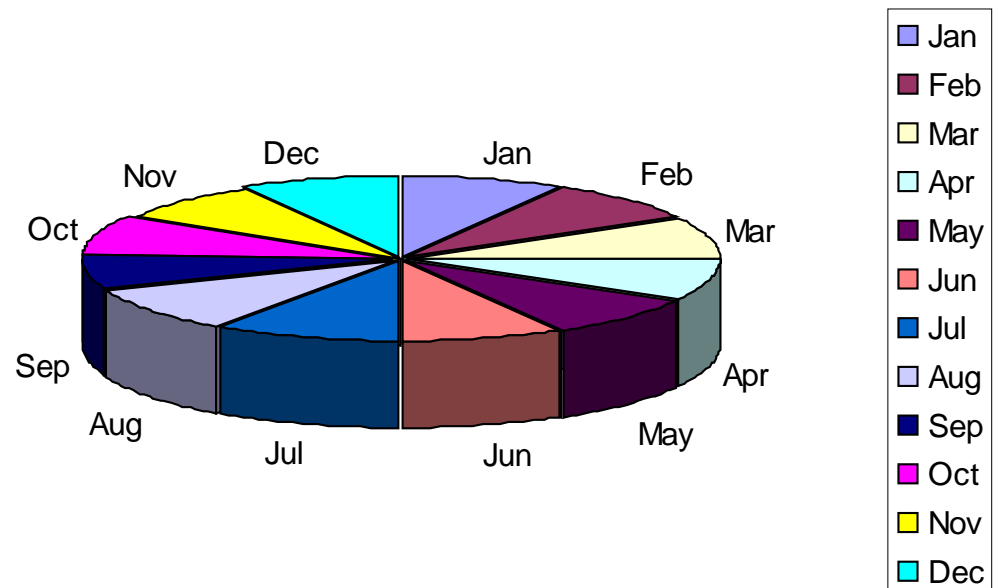


- All the important information is missing from this graph!

# Pie Chart

- What is missing from this pie chart?

Solar Eclipses by Month (1901-2000)  
Relative Frequency

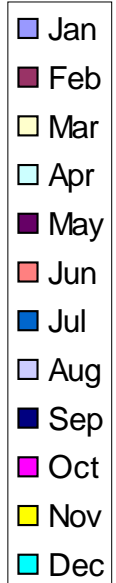
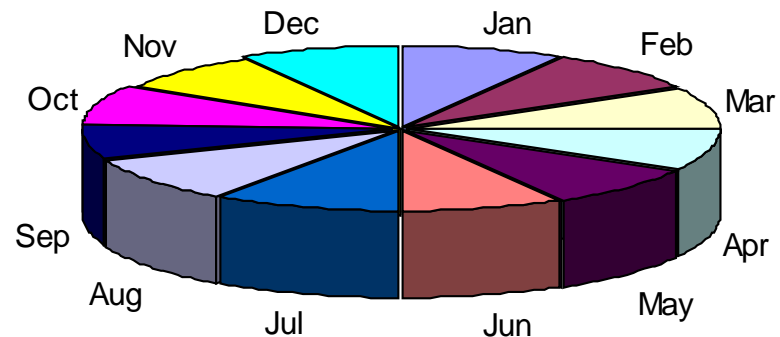


# Pie Chart

- What is missing from this pie chart?

Solar Eclipses by Month (1901-2000)  
Relative Frequency

- A pie chart must display the percentage (i.e. relative frequency) for each sector of the pie.

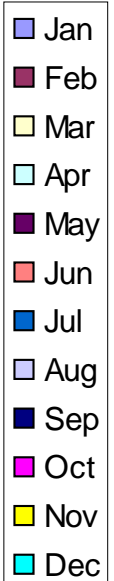
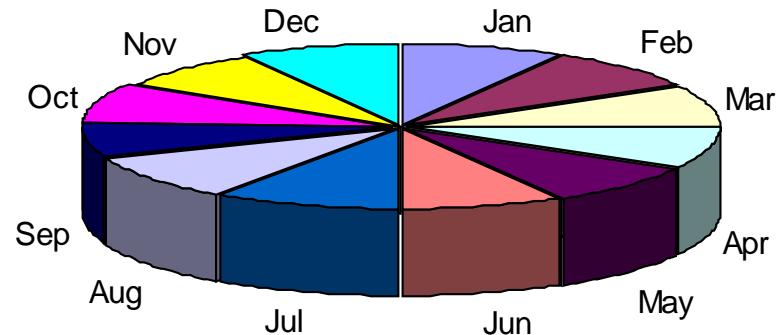


# Pie Chart

- What is missing from this pie chart?

Solar Eclipses by Month (1901-2000)  
Relative Frequency

- There are no percentages displayed in this pie chart.

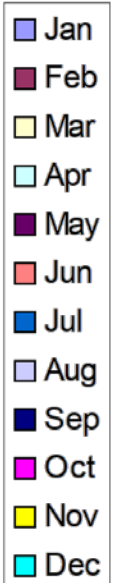
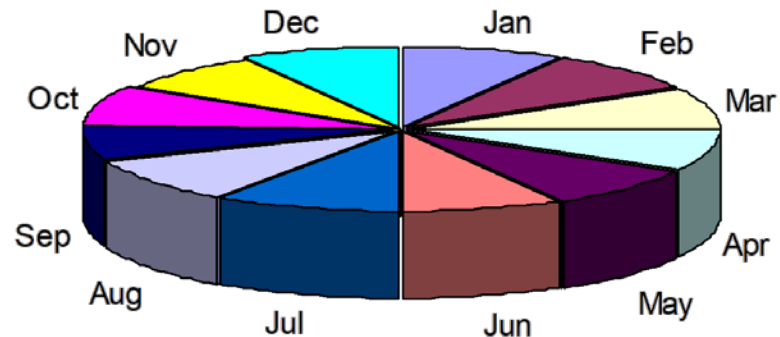


# Pie Chart

- What else should be changed in order to make this pie chart *meaningful and comprehensible*?

Solar Eclipses by Month (1901-2000)  
Relative Frequency

- To be meaningful, the sectors of a pie chart must be displayed so that their proportions can be compared.



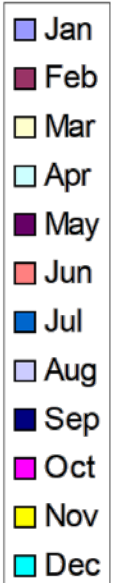
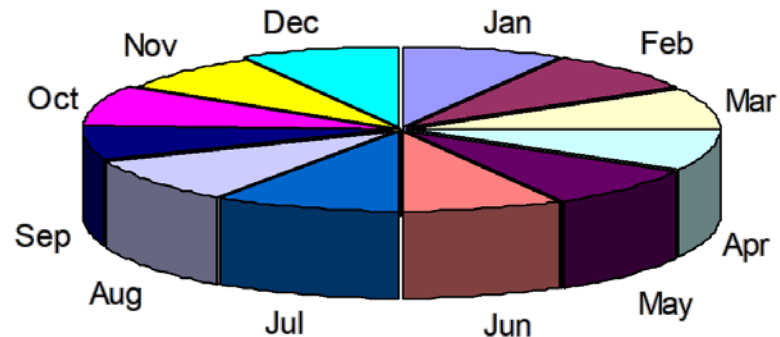


# Pie Chart

- What else should be changed in order to make this pie chart *meaningful and comprehensible*?

Solar Eclipses by Month (1901-2000)  
Relative Frequency

- A 3-dimensional pie does not allow one to view the proportions of the sectors of the pie.

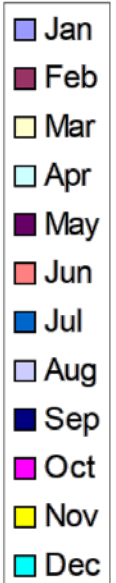
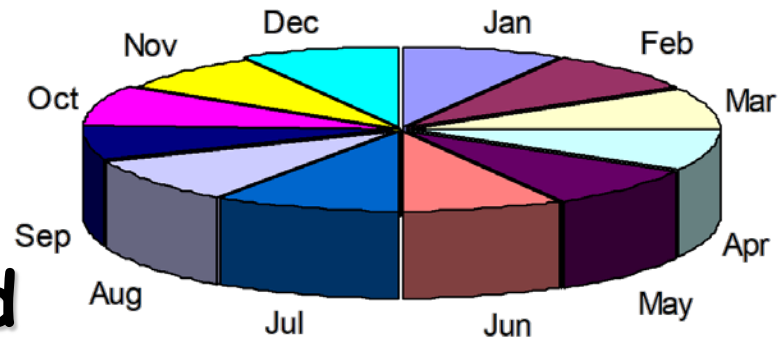


# Pie Chart

- What else should be changed in order to make this pie chart *meaningful and comprehensible*?

Solar Eclipses by Month (1901-2000)  
Relative Frequency

- A pie chart must be created as a circle so that the face of the pie can be viewed and the proportions of the sectors can be compared.

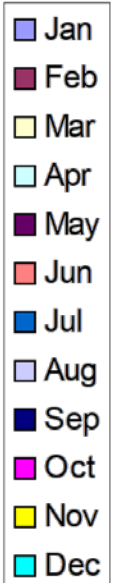
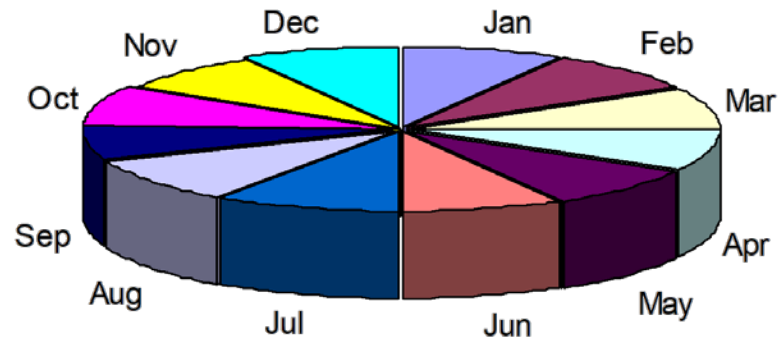


# Pie Chart

- What else should be changed in order to make this pie chart *meaningful and comprehensible*?

Solar Eclipses by Month (1901-2000)  
Relative Frequency

- The title is meaningless!

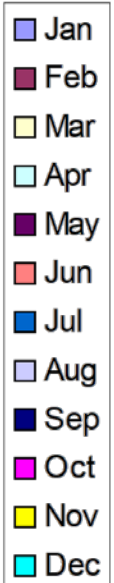
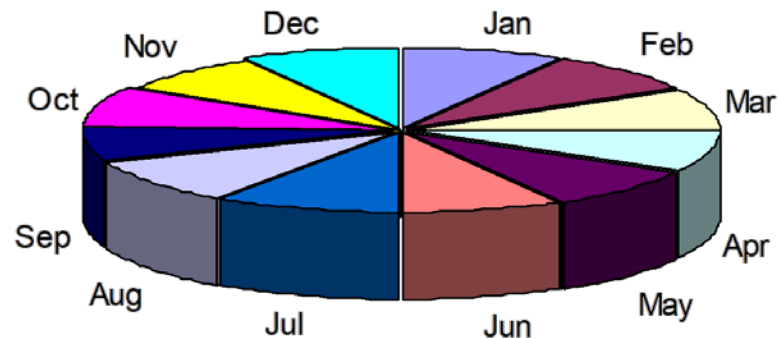


# Pie Chart

- What else should be changed in order to make this pie chart *meaningful and comprehensible*?

Solar Eclipses by Month (1901-2000)  
Relative Frequency

- The title itself demonstrates that this pie chart is meaningless as relative frequency has not been included.

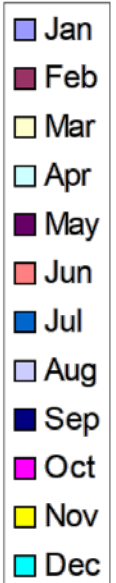
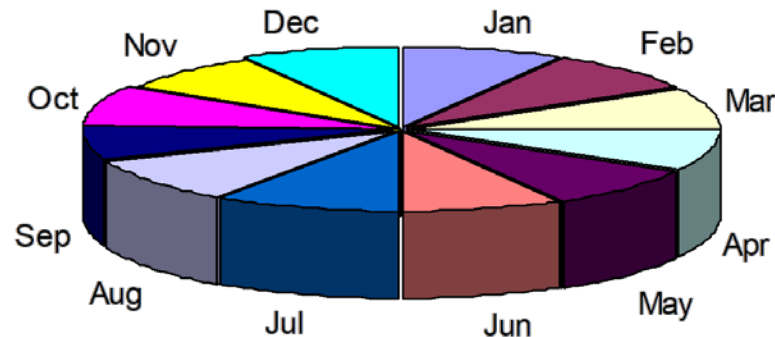


# Pie Chart

- What else should be changed in order to make this pie chart *meaningful and comprehensible*?

Solar Eclipses by Month (1901-2000)  
Relative Frequency

- Since the legend included with this "graph" does not share any information, it serves no purpose.



# Discuss/examine the graph below.

- What else should be changed in order to make this "bar graph" meaningful and comprehensible?



# Discuss/examine the graph below.

- What else should be changed in order to make this “bar graph” meaningful and comprehensible?



- There is no title.

# Discuss/examine the graph below.

- What else should be changed in order to make this “bar graph” meaningful and comprehensible?



- There are no axes.



# Discuss/examine the graph below.

- What else should be changed in order to make this “bar graph” meaningful and comprehensible?



- There is no horizontal axis.

# Discuss/examine the graph below.

- What else should be changed in order to make this “bar graph” meaningful and comprehensible?



- There is no vertical axis.

# Discuss/examine the graph below.

- What else should be changed in order to make this “bar graph” meaningful and comprehensible?



- The bars are NOT in proportion!

# Discuss/examine the graph below.

- What else should be changed in order to make this “bar graph” meaningful and comprehensible?

- Examine the first bar for which the relative frequency is 22%

...



# Discuss/examine the graph below.

- What else should be changed in order to make this “bar graph” meaningful and comprehensible?



- Examine the first bar for which the relative frequency is 22% and compare this to the relative frequency for the last bar, 41%.

# Discuss/examine the graph below.

- What else should be changed in order to make this “bar graph” meaningful and comprehensible?



- Doubling the length for the first bar should be slightly greater (3%) than the length for the last bar.

# Discuss/examine the graph below.

- What else should be changed in order to make this “bar graph” meaningful and comprehensible?



- The bars are NOT in proportion to one another.